

MEDIA INFORMATION

April 19th, 2006

ELO Digital Office launches ELOoffice 7.0 at Sydney CeBIT

Following the great success at the Hannover CeBIT, ELO Digital Office Australia launches **ELOoffice 7.0** at the Sydney CeBIT.

With more than 50,000 units sold in Germany last year alone ELOoffice is the clear No. 1 in stand alone document management systems. More than 200,000 users benefit from ELOoffice and we will launch version 7.0 in Australia next month.

Together with its business partners **AVOGA, BDSI, Fusion IT, GoSystems, Harms Consulting** and **Hewlett Packard** ELO will present the benefits of modern document management systems at the CeBIT. ELOoffice is a true DMS solution for single workstations as well as smaller workgroups and is available in three versions ranging from \$129 to \$699. These ELOoffice versions make large corporation's tools available to smaller companies or individual departments.

ELO Digital Office develops software which is truly scalable. ELO's clients range from single users in home or small business to large corporations such as Allianz, Alcatel, Lufthansa, Daimler Chrysler, Goodyear or Hochtief.

ELOoffice is available through ELO, its business partners, a reseller network and hardware manufacturers such as HP or Kyocera Mita. Many customers have benefited from bundled offers with great names such as HP or Kyocera Mita. At the Sydney CeBIT HP will show why and how.

ELO Digital Office is one of the world's leading developers of document management and enterprise content management systems. Over 550,000 users and thousands of companies benefit from ELO DMS solutions.

ELO Digital Office and its Australian Business Partners exhibit its solutions at this year's **Sydney CeBIT (May 9th to 11th - Hall 5 Stand T15)**

Contact ELO to find out more

Contact: Rainer Krause – Managing Director
Phone: 02 9986 2050
Email: info@elodigital.com.au
Web: www.elodigital.com.au

ELO Digital Office AU/NZ Pty Ltd is a member of the ELO group of companies.
© Copyright 2006 ELO Digital Office AU/NZ Pty Ltd

ELOoffice 7.0 - Document Management & Archiving

Document Management for Everyone

Everybody knows how an archive works. Filing cabinets, folders and registers are familiar to all. ELO Digital Office has taken this tried and trusted method of organising documents and turned it into a modern electronic archiving system. That the entire flow of paper, at home or in the office, can be transferred from the desk to the PC is just one of the many advantages offered by **ELOoffice 7.0**.

Clear Overview of Documents

ELOoffice provides the user with a multi-media document management system, capable of managing files of various formats and sources in one central archive. Whether the archive contains Microsoft Office documents, picture files, videos, scans of documents or emails **ELOoffice 7.0** always provides a clear and structured overview of the archived documents.

Save Time and Effort Whilst Reducing Costs

The technologically advanced functionality of **ELOoffice** provides users with a highly capable tool for the archiving, searching, linking and processing of documents, all whilst retaining a clear record of any processing or changes that took place.


Improved Information Security


ELOoffice ensures that information is always available and cannot be accidentally deleted. Whenever documents are required the search function within **ELOoffice** ensures that all the relevant information can be rapidly retrieved.


Information Sharing


ELOoffice is a cost effective tool for knowledge and information sharing. The use of a central archive allows other users access to documents and information, whilst the **ELO** security functions ensure that access to sensitive information is restricted to authorised users. **ELOoffice** ensures that the required data is supplied upon demand.


Archiving for Paper and Digital Documents


 The clear and intuitive user interface allows the efficient storage and retrieval of archived information via logical filing structures and the tree view.

 Direct archiving of Office documents into the **ELO** archive system.


 Scanning and filing of paper documents.

 Fax interface allows documents to be sent and received directly.


 Unrestricted printing of archived documents.

 Documents can be emailed directly from **ELOoffice**.

Searching, Retrieval and Editing of Documents

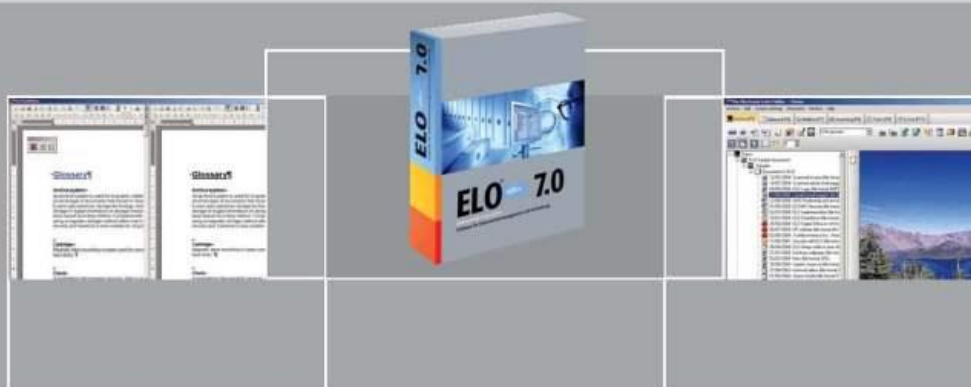
 Standardised filing of documents through predefined document keyword forms.

 Integrated OCR function for automated keywording from individual documents.

 Slide show and thumbnail view of graphical documents such as digital photos etc.

Teamwork with Groupware Functions

- Reminder Items with priority management for the central administration of documents with deadlines, such as invoices or contracts.
- Reminder Items can also be created for other users.
- Network capabilities allow multiple users simultaneous access to documents.
- Detailed user and key administration allows individual access rights to be assigned to individual users.
- The Mailbox serves as reception area for documents of all types. A wide range of functions is provided for receiving, processing and forwarding documents.



ELOoffice 7.0 - Document Management & Archiving**ELOoffice 7.0 Highlights**

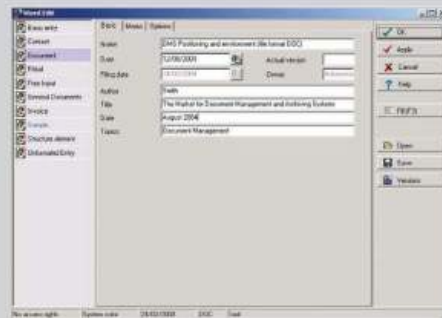
- **Profile administration** - utilising various profiles allows the use of archives on the local machine as well as network archives.
- **Sounds like search** - returns words with a similar sound or spelling to the search text when searching for documents.
- **Doubleview** - different versions of documents can be simultaneously displayed and compared.
- **Multiple selection** - the tree view allows the selection and processing of multiple documents, for example the sending of mails.
- **Consistency tests for the database.**
- **Display of previous search texts** - a list of the previously used search texts can be utilised.
- **Administration and display of digitally signed documents** - documents in the archive can be digitally signed with an optional digital signature component.

System Requirements

- 500 MHz CPU with 256 MB RAM.
Recommended: 1 GHz CPU with 512 MB RAM
- DVD-ROM drive. *Recommended: DVD-Burner*
- Graphics card: minimum SVGA (800 x 600).
Recommended X VGA graphics card (1024 x 768) with 24 Bit colour
- Operating System: Microsoft Windows 2000, XP or 2003.
- Approximately 700 MB free hard drive space for program software. *Recommended: 1 GB free space for full installation.*
- Additional free hard drive space for archive (approx. 1 GB per 20,000 Scanned pages in black/white)
- *TWAIN compatible scanner recommended*

The ELO Product Family:

- **ELOoffice 7.0**: the small business or home office solution
- **ELOprofessional**: SQL based modular system for medium and large companies.
- **ELOenterprise**: ELO's flagship product based on JAVA technology. Specially developed for data centres, large companies, multinationals or groups.



ELOoffice 7.0 combines modern technologies with proven office organisation tools.

For further information please contact:**ELO Digital Office AU/NZ Pty Ltd**

4/14 Narabang Way
Belrose, NSW 2085

P: +61 2 9986 2050
E: info@elodigital.com.au
W: www.elodigital.com.au



Documents at a Keystroke