

New in ELO 10.1

[Date: 2017-02-10 | Program version: 10.01.000]

This document briefly describes a few new features in ELO 10.1. Refer to the corresponding user manuals for further information on the individual features.

Contents

1	Server Setup.....	2
2	Server Modules	3
2.1	ELO Indexserver	3
2.2	ELO Administration Console.....	3
2.3	ELOWf.....	5
2.4	ELOxc for Microsoft EWS	6
3	ELO Clients	7
3.1	ELO Java Client.....	7
3.2	ELO Web Client.....	9
3.3	ELO Clients for Microsoft Office.....	10
3.4	ELO Dropzone	11

1 Server Setup

- ELO iSearch engine update to Elasticsearch 5.1.1.



Note: After updating Elasticsearch, you will need to reindex the database. Otherwise, ELO iSearch will not work.

Depending on the size of the repository, reindexing may take quite some time. For more information, refer to the document *Background setup of the full text index (database)*.

- Unattended installation is supported.

The screenshot shows the 'ELO 10 Server Setup' web interface. The 'Repositories' tab is selected. The 'System language' dropdown menu is highlighted with a red box and set to 'German'. Other fields include License key, Installation path, Log path, ELO administrator user name (Administrator), ELO administrator password, Host name or alias (ELODOKU001), Repository name (Repository1), Additional Search languages, and Document storage path. Navigation buttons 'Back to menu' and 'Next' are visible at the bottom.

Fig. 1: Language selection in the Server Setup

- Web apps only updated when newer versions are available.
- Repository language can be selected during installation if not detected automatically.
- Thesaurus created/imported.
- ELOxc Console is installed by default.

2 Server Modules

2.1 ELO Indexserver

- It is now possible to stream videos via WebDAV.
- The profileops table has been extended to include Elasticsearch.
- Improved reindexing for Elasticsearch.



Note: After installation, the Lucene program library used for the iSearch (Elasticsearch) requires sufficient memory to reindex the repository documents for the full text search. For more information, refer to the *System requirements* document.

2.2 ELO Administration Console

- The ELO Administration Console no longer contains flex elements (keywording forms).



Note: The ELO Administration Console now uses a new concept for creating and managing keywording forms.

We recommend you use the following basic procedure for creating keywording forms:

1. Which keywording forms do you need?
2. Which index fields and settings do the keywording forms have?
3. Which index fields do you want to use multiple times in which keywording forms?

Proceed as follows:

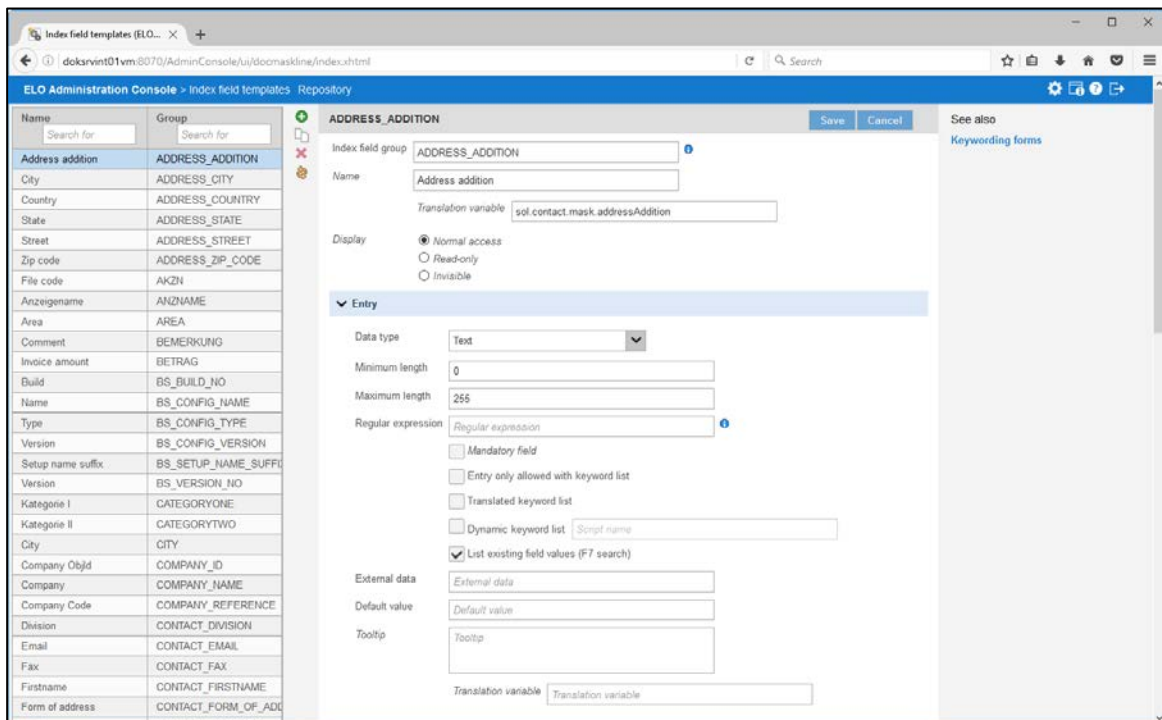


Fig. 2: Index field templates

4. Create the index fields you require.
5. Now create the keywording forms.
6. Assign the index fields to the keywording forms.



Warning: Due to a database change, it is not possible to roll back to a previous version.

- The "Index field templates" area is new. Here is where you need to create the index fields for the keywording forms.
- The "ELOxc for Microsoft EWS" area is new. You can automatically switch to the configuration of instances in ELOxc for Microsoft EWS from here.
- The "Keys" and "Import and export" areas are no longer available.

2.3 ELOWf

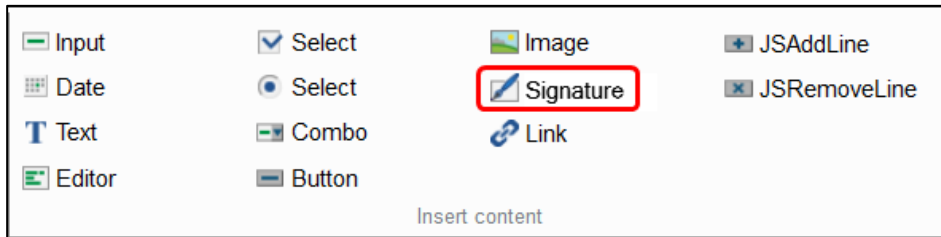


Fig. 3: Button for signature fields.

- Signature components can be used in forms (with HTML5 canvas).
- A toast now appears instead of a dialog box when you save a form.
- ELOas can now be addressed from the forms.
- Administrators can change profile images via the profile pages.
- A time stamp now appears when editing feed posts.

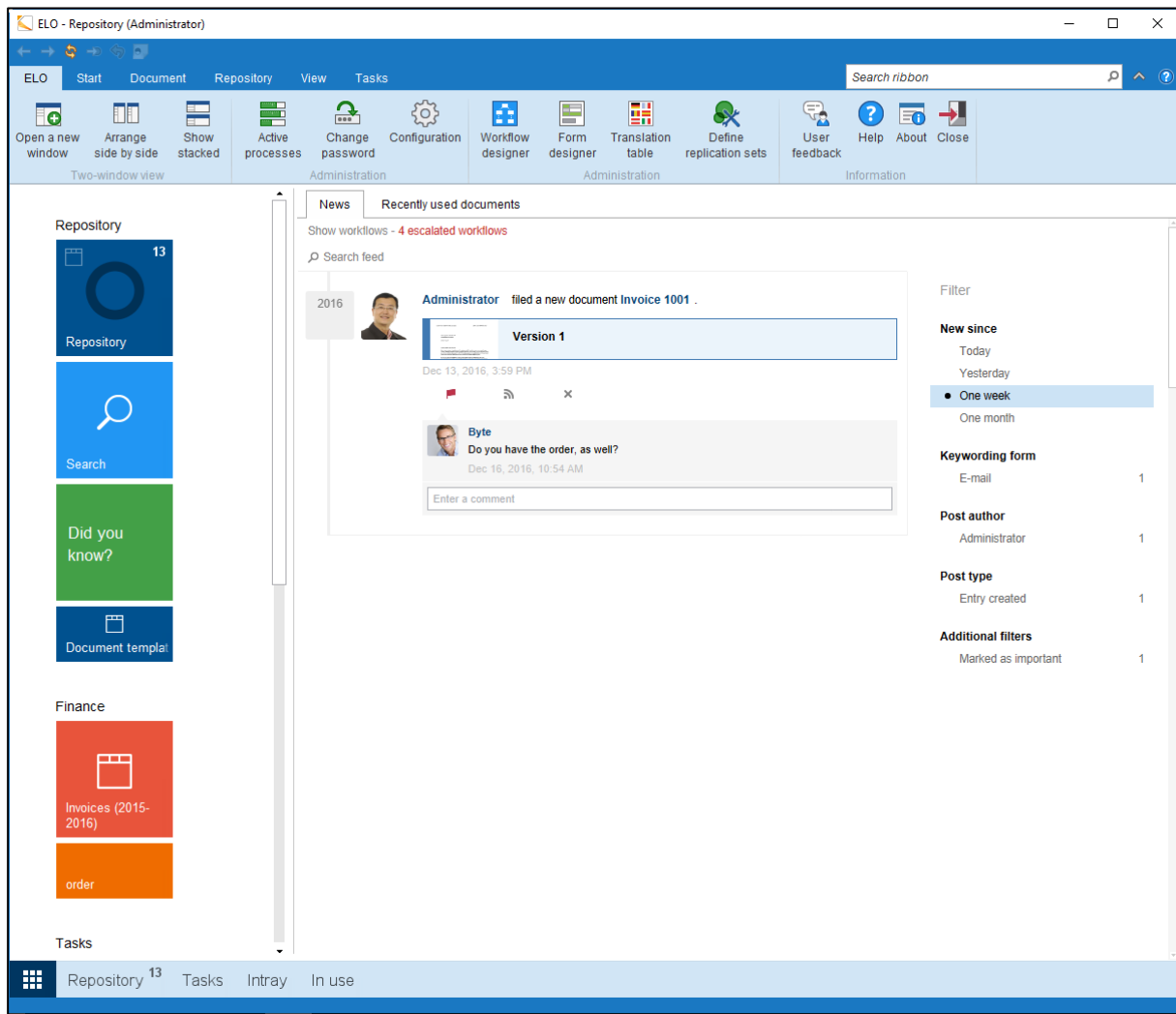


Fig. 4: Hashtag overview

- Users can now see all posts related to a hashtag in this overview (without time filter).

2.4 ELOxc for Microsoft EWS

- Multi-language support (DE, EN, FR)
- It is now possible to make external calls (HTTP, IX, WF)
- The interface layout has been modified
- New testing options (e.g. check whether a SORD object exists)
- Log viewer

3 ELO Clients

3.1 ELO Java Client

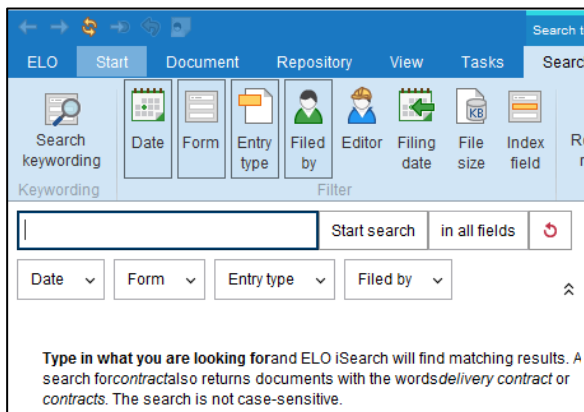


Fig. 5: Filters preselected by default in the 'Search' work area

- The search filters in the *Search* work area have been reorganized. Some filters are now preselected by default. The use of the filter functions has changed slightly. A *File size* filter has been added.

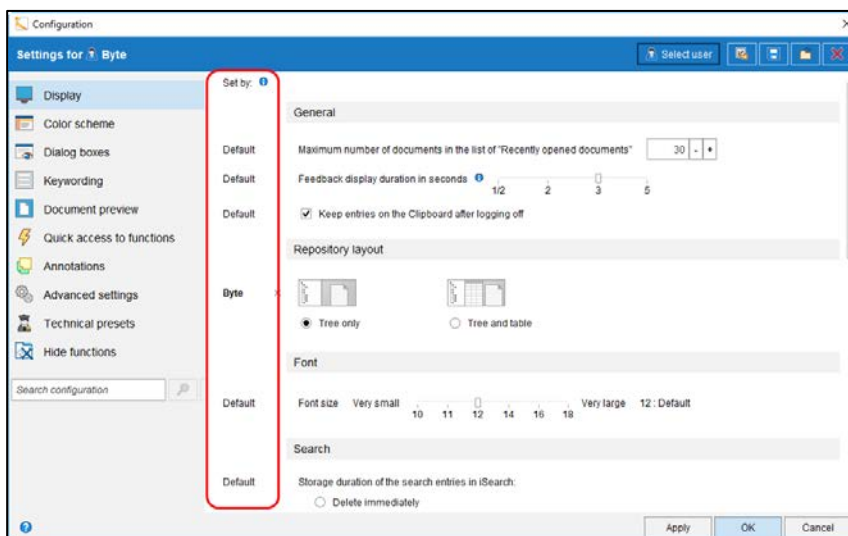


Fig. 6: 'Set by' column in the configuration

- The following new features have been implemented in the configuration:
 - Clearer indication of the level (user, options group, global, or default) at which changes were made.
 - Language selection via configuration also possible (not just in the logon dialog box).
 - Administrators can enter barcode serial numbers via the configuration.

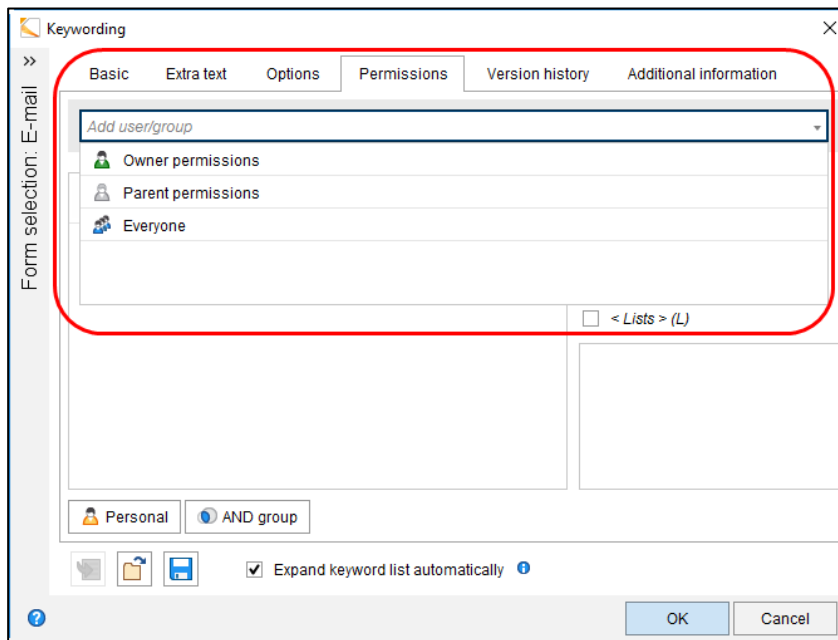


Fig. 7: User selection changed

- Dialog boxes in which users can be selected have been redesigned.
- Enhanced keyboard control (e.g. in the keywording and for search filters).
- Visible deletion markers for reminders, external links, monitored items, preview profiles, and favorites.
- Two URLs can be entered per repository profile: a default URL and a fallback URL.

3.2 ELO Web Client

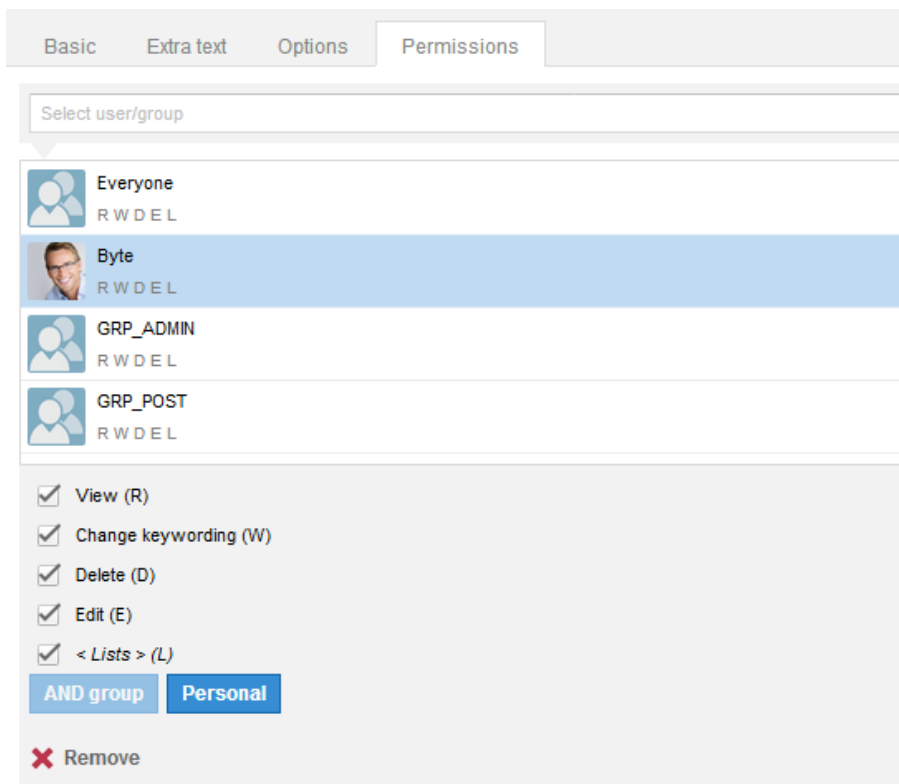


Fig. 8: Permissions in the ELO Web Client

- Editing and setting permissions
- F7 search in keywording (previously entered values) now possible
- Users can now set the automatic feed subscription option in the ELO Web Client configuration.

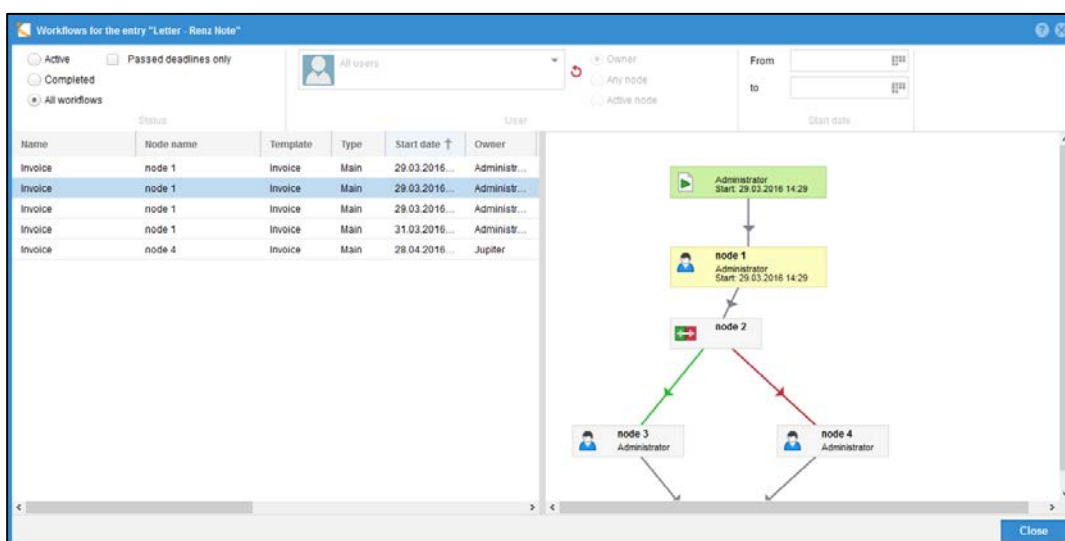


Fig. 9: Workflows for the entry in the ELO Web Client

- It is possible to show workflows for an entry.
- Improved startup time.

3.3 ELO Clients for Microsoft Office

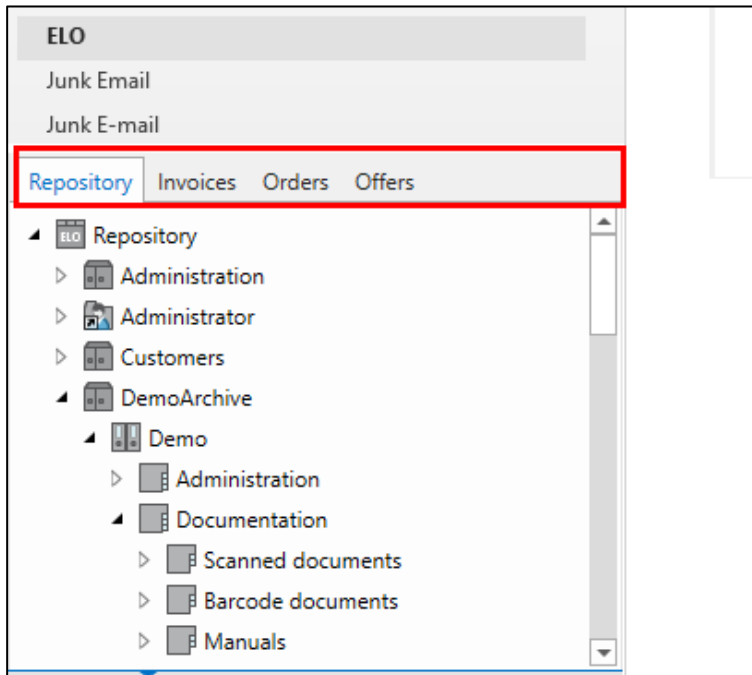


Fig. 10: View filters in the ELO Clients for Microsoft Office.

- DMS Desktop now has repository view filters like those in the ELO Java Client. These are displayed in tabs above the repository tree.
- The Business Solutions are integrated into the ELO Client for Microsoft Outlook.
- It is now possible to save search favorites in DMS Desktop.
- The ELO Java Client function "Load new version" is now available in DMS Desktop.
- Documents that are edited via WebDAV are recognized. A new status was added for this: "In use by a web service".

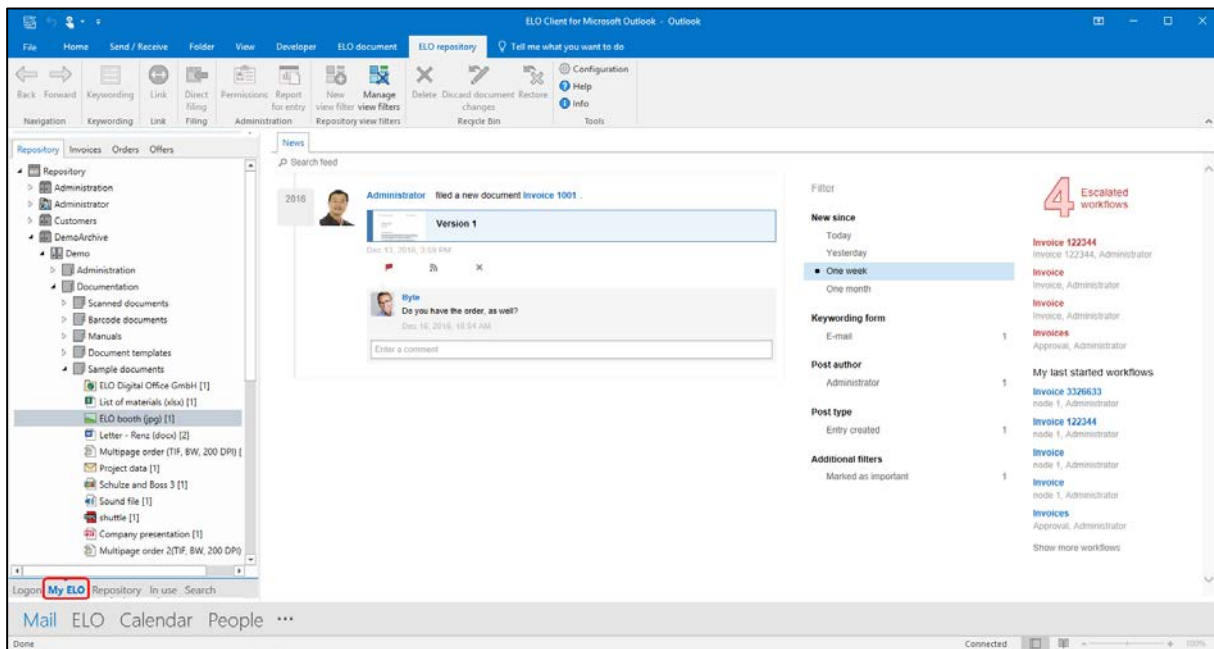


Fig. 11: 'My ELO' work area in the ELO Client for Microsoft Outlook

- The *My ELO* work area has now been implemented in the ELO Client for Microsoft Outlook.

3.4 ELO Dropzone

- Headers can be read out from Microsoft Word documents and copied to the full text database or to index fields.